

# Penile Self Injection

A tiny needle is used to inject medication into the penis. The medication helps the penis become fully erect and stay that way long enough for sexual intercourse.

## Preparing for Injection:

1. Wash hands with soap and water
2. Fill syringe with the prescribed amount of medication
3. Grasp the penis near the base and pull the foreskin back until it is taut
4. Wipe the side of the penis with an alcohol swab where you plan to inject the medication

**IMPORTANT:** Do NOT inject at the top, bottom, or head of the penis, do NOT inject medication into a visible vein, and alternate sides and location of injection to prevent scarring. If bruising or swelling occurs, apply pressure and ice.

## Injecting the Medication:

1. Insert the needle at a 90 degree angle (perpendicular) to the side of the penis
2. Push the needle firmly through the skin until the needle is buried inside the penis
3. Inject the medication and remove the syringe
4. Apply pressure to the injection site for 2-3 minutes
5. Dispose of the syringe
6. Stand up to help your erection develop
7. Erection should last 60 – 90 minutes

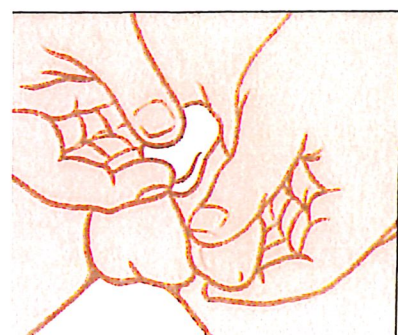
\*Use only 1 injection in a 24 hour period. Only 3 injections per week.

\*Medication is heat and light sensitive – Please keep your medication in the refrigerator

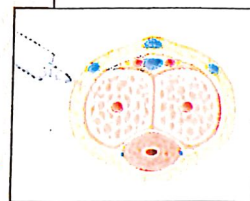
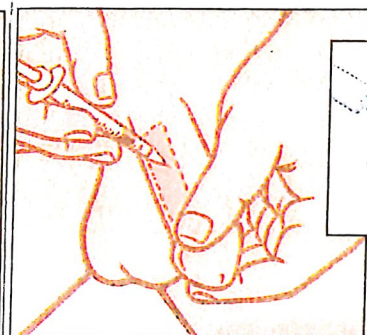
## If you have an erection that lasts longer than 2 hours:

1. Take 2 30mg Sudafed tablets and apply ice. (unless allergic or contraindicated due to heart disease, specifically high blood pressure)
2. Notify Dr. Nayak if your erection lasts longer than 4 hours. Call the hospital 217-342-2121 to have Dr. Nayak paged or go to the nearest ER.

### Preparing for Injection

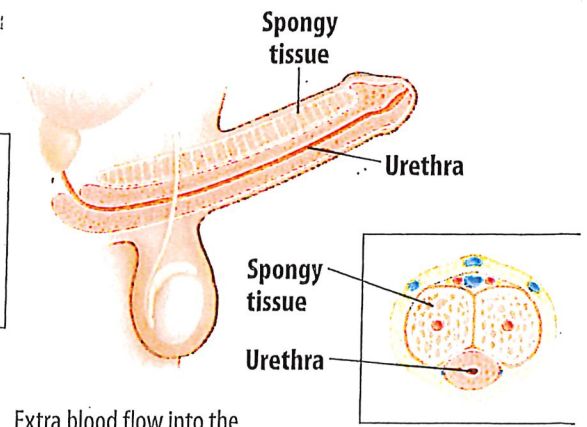


### Injecting the Medication



Insert the needle straight into the penis.

The injection site can be in any part of the shaded area.



Extra blood flow into the penis creates an erection

Cross section of penis